



MODEL P203

20kHz NEW

Integrated Welder For Ultrasonic Plastics Assembly



The new 20 kHz model P203 integrated welder is an all-in-one super-rigid ultrasonic press that combines power, versatility and microprocessor control in one convenient unit. The P203 welder easily handles significantly larger part size and force requirements and delivers consistent reliability for every application.

The built-in microprocessor with easy-access front-panel keypad provides streamlined smart-logic navigation through user-friendly welding mode controls and displays.

STANDARD FEATURES INCLUDE:

- Automatic Frequency Tuning
- Back-Lit LCD Display
- Weld, Hold, Delay and Afterburst Timers
- Digital Wattage Display
- Ultrasonics Load Meter Scale
- Upper and Lower Weld Limit Settings
- Soft-start Overload Protection Circuitry
- Load Regulation Circuitry

Features

- Digital Time and/or Constant Energy Weld Modes Available
- Front Panel Pneumatic and Microprocessor Controls
- Digital Amplitude Control
- Ultrasonic Horn/Stack Frequency Display
- Single-piece Rigid Cast Aluminum Machine Base and Column Hub

Models

Available in:

- 1200 watts – Model P203-12
- 2200 watts – Model P203-22

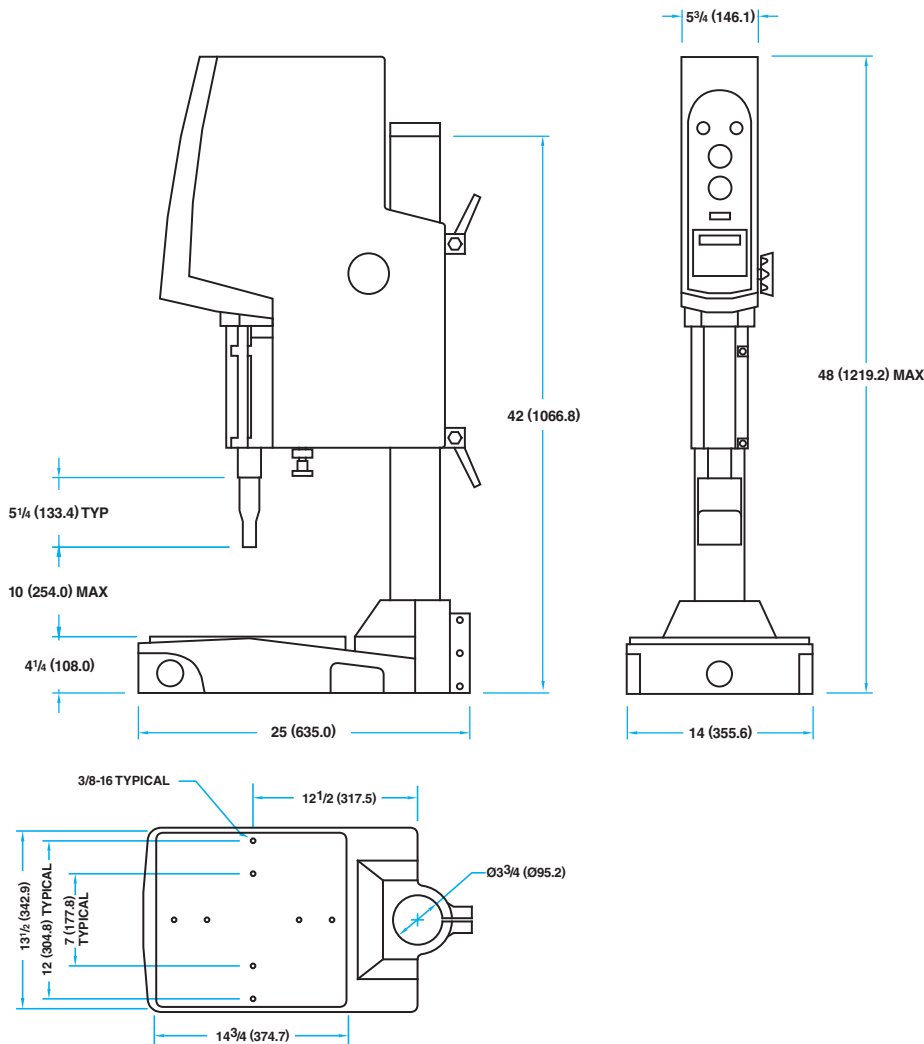
P203 Press Features

- Single Piece Rigid Cast Aluminum Machine Base and Column Hub
- Super-rigid 3.75" Steel Column Diameter with 0.5" Wall Thickness
- Single Rail Linear Slide
- Direct In-Line Air Cylinder
- Front Panel Pneumatic Speed and Pressure Controls
- Microprocessor with Front Panel Keypad

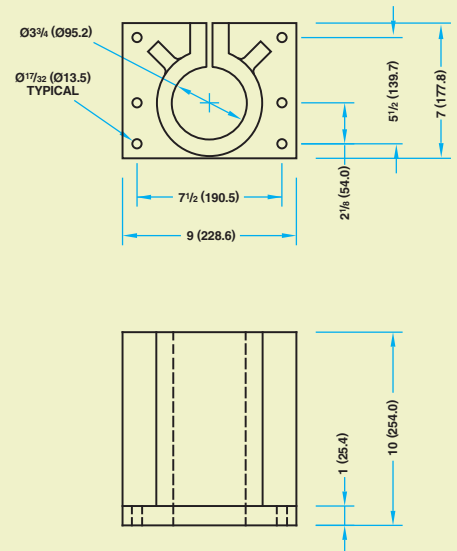
Specifications, Additional Features, and Options

Dual Cycle Start Buttons	Standard
Non-Contact Cycle Start Buttons	Optional
Front Emergency Stop	Standard
Head Adjust Counter Balance Spring	Standard
Adjustable Positive Stop	Standard
Automation Limit Switches	Optional
360° Snap-In Stack Assembly	Standard
Rigid Mount Booster	Optional
Stand Alone Column Hub	Optional
Extended Length Column	Optional
4" (101.6) Stroke Air Cylinder	Standard
Air Cylinder Bore Diameter	2.5" (63.5)
Clamping Force at 90 PSIG	441 lbs. (1961n)
Input Voltage	220 VAC
Weight	180.5 lbs. / 81.9 kg

Dimensional Data All Dimensions: Inches (mm)



Optional Stand-Alone Hub



ULTRA SONIC SEAL

200 Turner Industrial Way • Aston, PA 19014
 Tel. 610.497.5150 • Fax 610.497.5195 • email: info@ultrasonicseal.com
 www.UltraSonicSeal.com

©2007
 Printed in U.S.A.
 Not responsible for typographical errors.
 Specifications subject to change without notice.